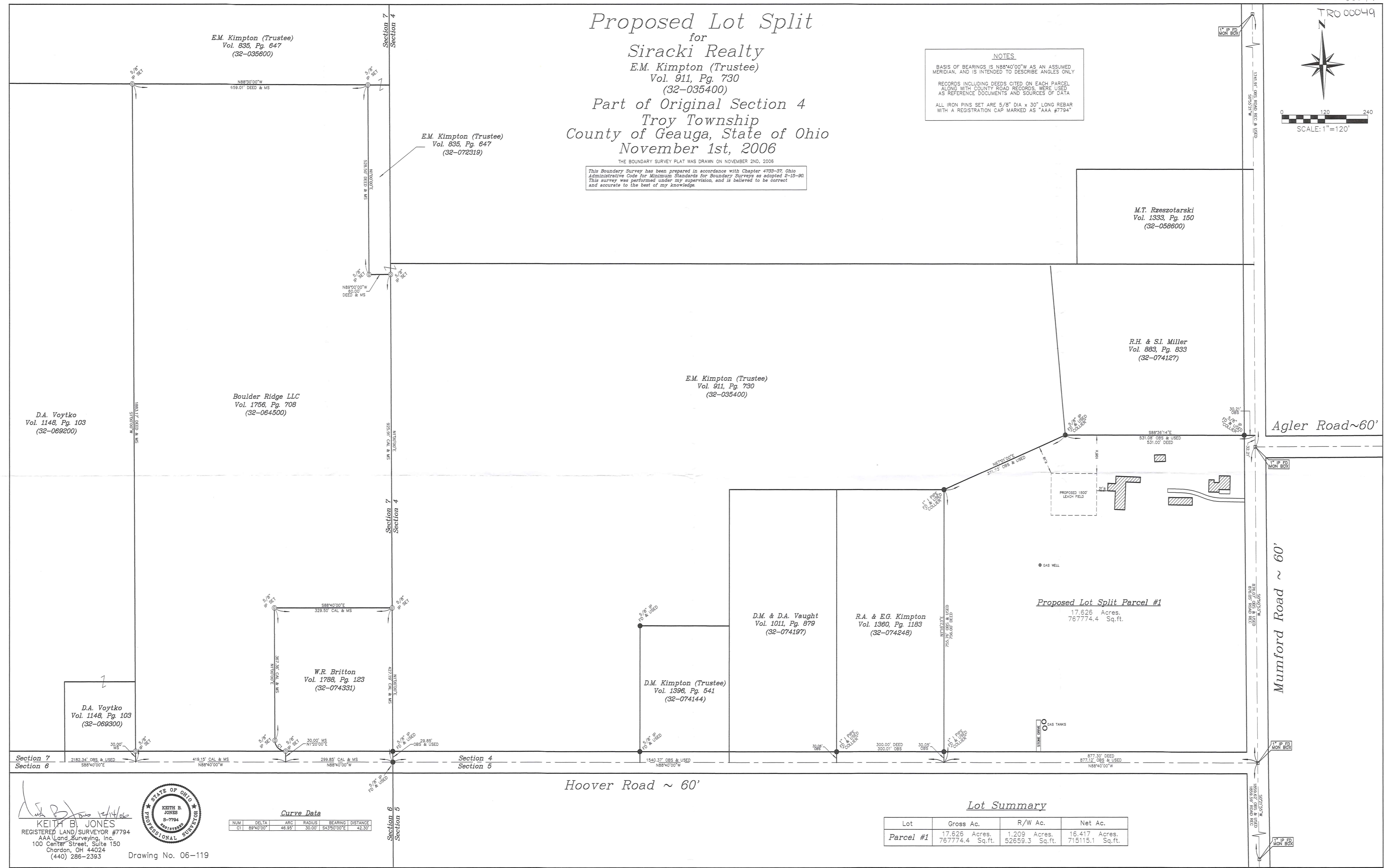
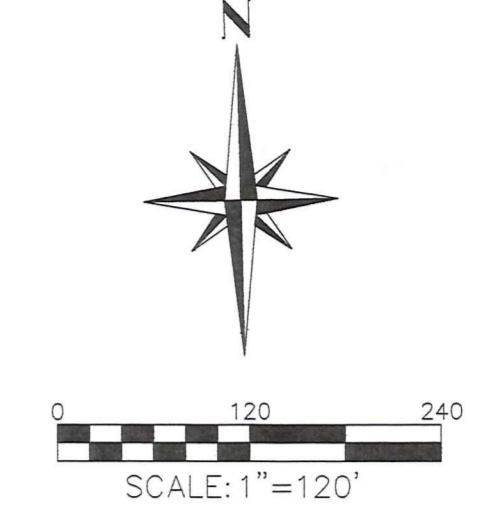


Proposed Lot Split
 for
Siracki Realty
 E.M. Kimpton (Trustee)
 Vol. 911, Pg. 730
 (32-035400)
 Part of Original Section 4
 Troy Township
 County of Geauga, State of Ohio
 November 1st, 2006

THE BOUNDARY SURVEY PLAT WAS DRAWN ON NOVEMBER 2ND, 2006
 This Boundary Survey has been prepared in accordance with Chapter 4733-37, Ohio Administrative Code for Minimum Standards for Boundary Surveys as adopted 2-15-90. This survey was performed under my supervision, and is believed to be correct and accurate to the best of my knowledge.

NOTES
 BASIS OF BEARINGS IS N88°40'00"W AS AN ASSUMED MERIDIAN, AND IS INTENDED TO DESCRIBE ANGLES ONLY
 RECORDS INCLUDING DEEDS CITED ON EACH PARCEL ALONG WITH COUNTY ROAD RECORDS, WERE USED AS REFERENCE DOCUMENTS AND SOURCES OF DATA
 ALL IRON PINS SET ARE 5/8" DIA x 30" LONG REBAR WITH A REGISTRATION CAP MARKED AS "AAA #7794"



E.M. Kimpton (Trustee)
 Vol. 835, Pg. 647
 (32-035600)

E.M. Kimpton (Trustee)
 Vol. 835, Pg. 647
 (32-072319)

E.M. Kimpton (Trustee)
 Vol. 911, Pg. 730
 (32-035400)

M.T. Rzeszotarski
 Vol. 1333, Pg. 150
 (32-058600)

R.H. & S.I. Miller
 Vol. 883, Pg. 833
 (32-074127)

D.A. Voytko
 Vol. 1148, Pg. 103
 (32-089200)

Boulder Ridge LLC
 Vol. 1756, Pg. 708
 (32-064500)

W.R. Britton
 Vol. 1788, Pg. 123
 (32-074331)

D.M. Kimpton (Trustee)
 Vol. 1396, Pg. 541
 (32-074144)

D.M. & D.A. Vaught
 Vol. 1011, Pg. 879
 (32-074197)

R.A. & E.G. Kimpton
 Vol. 1360, Pg. 1183
 (32-074248)

Proposed Lot Split Parcel #1
 17.626 Acres,
 767774.4 Sq.ft.

D.A. Voytko
 Vol. 1148, Pg. 103
 (32-069300)

Curve Data

NUM	DELTA	ARC	RADIUS	BEARING	DISTANCE
C1	89°40'00"	46.95'	30.00'	S43°50'00"E	42.30'

Lot Summary

Lot	Gross Ac.	R/W Ac.	Net Ac.
Parcel #1	17.626 Acres, 767774.4 Sq.ft.	1.209 Acres, 52659.3 Sq.ft.	16.417 Acres, 715115.1 Sq.ft.

Keith B. Jones
KEITH B. JONES
 REGISTERED LAND SURVEYOR #7794
 AAA Land Surveying, Inc.
 100 Center Street, Suite 150
 Chardon, OH 44024
 (440) 286-2393
 Drawing No. 06-119

